

# CLAYTON OPERA HOUSE PERFORMANCE HALL

## MAIN FLOOR:

- The dimensions of the main floor of the Performance hall are 53 feet wide and 58 feet long.
- The seating on the main floor is non-fixed and flexible. Seating can be arranged to needs.
- The House Center seating has 12 rows of 15 seats (rows A-L) and 1 row of 12 seats (row M) or a total of 192 seats in the Main Floor center section.
- The House Stage Right wing seating has 12 rows of 4 seats, or a total of 48 seats.
- The House Stage Left wing seating has 10 rows of 4 seats, or a total of 40 seats.
- Total seating on the main floor is 280 seats.
- Seating can be cleared from the main floor opening the space for dance or dining functions. Minimum fee for clearing and resetting the main floor is \$150.00
- The main floor can accommodate approximately 203 people with tables and chairs.
- The main floor can accommodate approximately 350 people with floor cleared of all seats.
- Sample floor plans for seating are available by request.

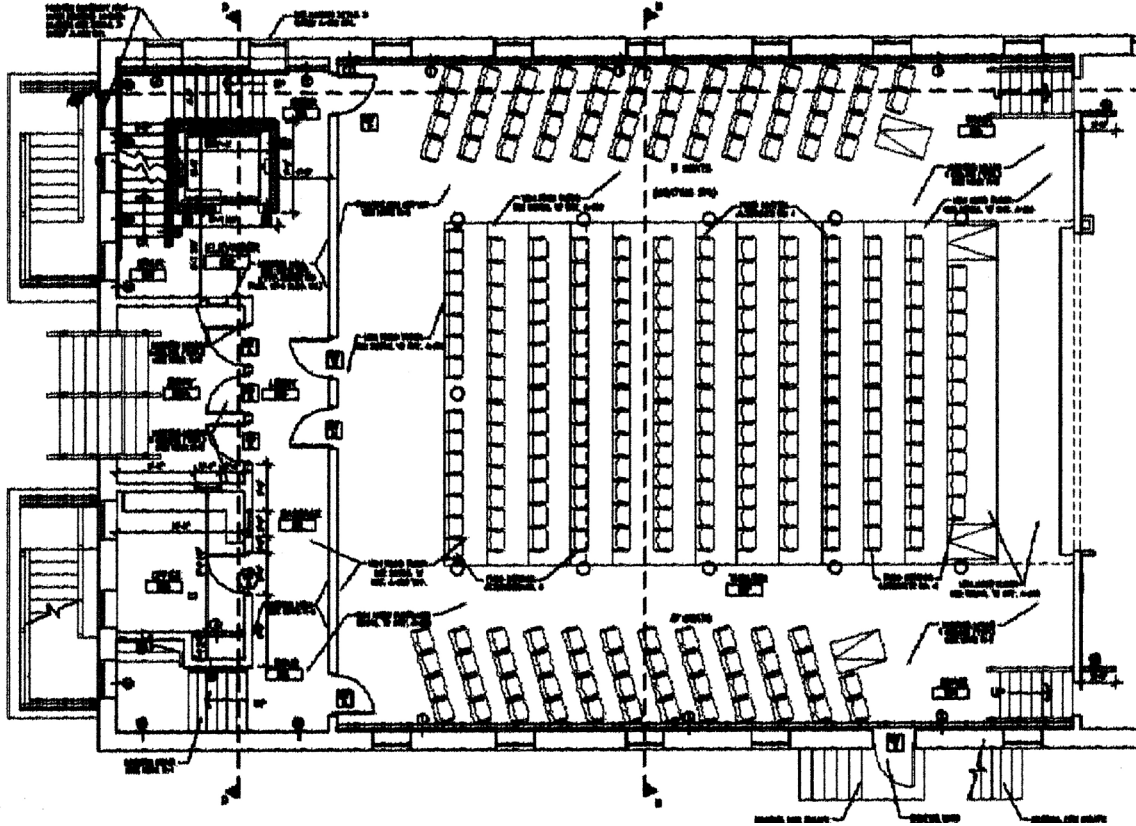
## BALCONY:

- The seating on the Balcony level is fixed.
- The Balcony center seating has 2 rows of 15 seats, (rows AA-BB) 1 row of 14 seats (row CC) and 2 rows of 12 seats for a total of 68 seats in the Balcony center section.
- Each wing of Balcony seating has 40 seats for a total of 80 seats in the Balcony wing sections.
- Total seating in the Balcony is 148 seats.
- The Lighting and Sound Booth is located in the rear of the Balcony, Stage Right.

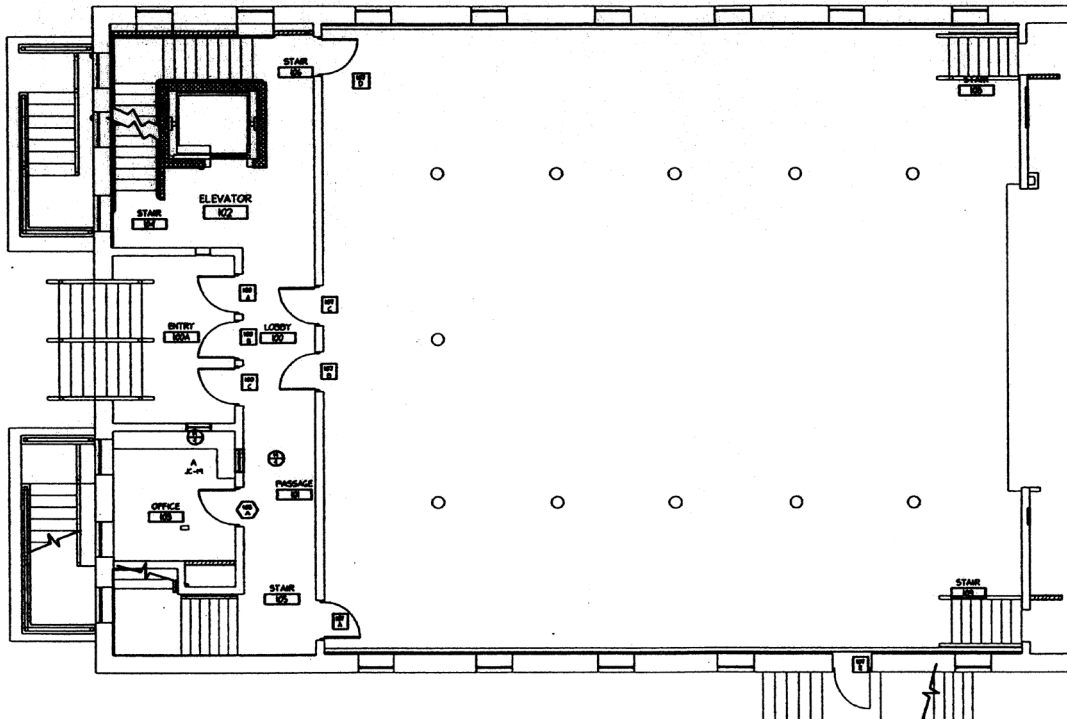


PERFORMANCE HALL  
as seen from the stage

# CLAYTON OPERA HOUSE PERFORMANCE HALL - MAIN FLOOR

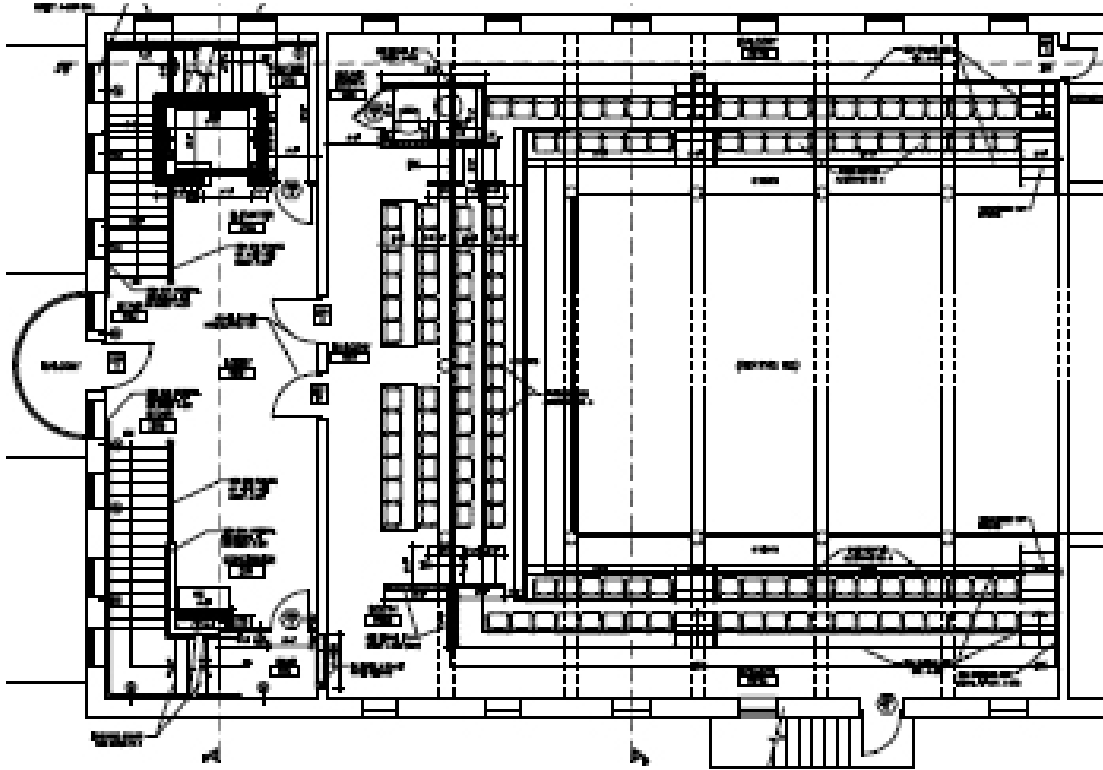


**MAIN FLOOR - HOUSE PERFORMANCE SEATING**  
CENTER - 192 SEATS / WINGS - 88 SEATS / TOTAL - 280 SEATS

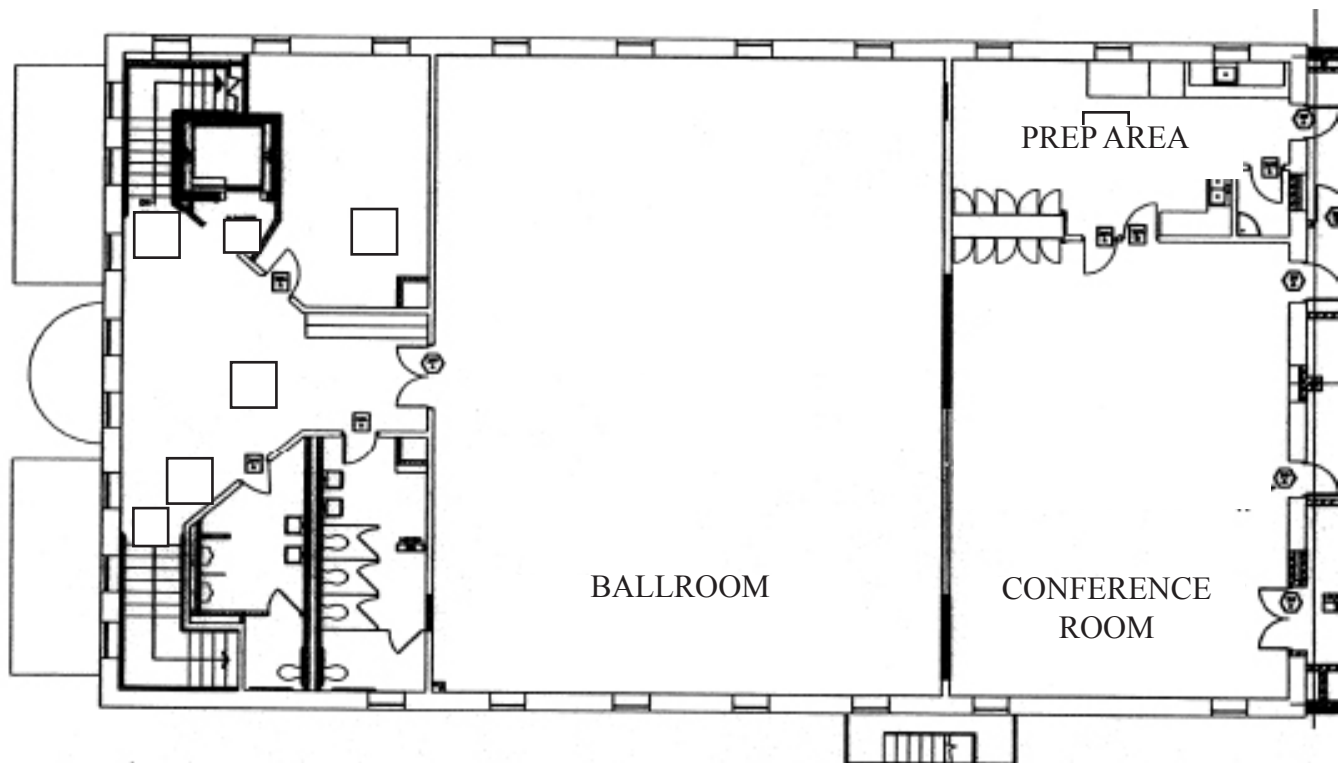


**MAIN FLOOR - OPEN AREA**  
SEATING WITH TABLES & CHAIRS - 203 PEOPLE / STANDING - 350 PEOPLE

CLAYTON OPERA HOUSE  
PERFORMANCE HALL - BALCONY LEVEL



**BALCONY LEVEL - FIXED SEATING**  
**CENTER - 68 SEATS / WINGS - 80 SEATS / TOTAL - 148 SEATS**  
\* Diagram does not show Row CC - 14 seats in the Center Section.



**THIRD FLOOR LAYOUT**  
**BALLROOM - CONFERENCE ROOM - PREP AREA**

# CLAYTON OPERA HOUSE

## THIRD FLOOR

### BALLROOM:

- The dimensions of the Ballroom are 42.5 feet by 53 feet.
- The Ballroom can seat approximately 300 people with chairs only.
- The Ballroom can seat approximately 150 people with tables and chairs.
- The Ballroom can be set up for multiple events. (Dances, dining, conferences)
- Lighting in the Ballroom is on a dimmer system and can be adjusted to needs.

### CONFERENCE ROOM:

- The dimensions of the Conference room are 27 feet by 39 feet.
- The Conference room can seat approximately 150 people with chairs only.
- The Conference room can seat approximately 75 people with tables and chairs.
- The Conference room can be set up for multiple events.(meetings, dining, conferences)
- Lighting in the Conference room is on a dimmer system and can be adjusted to needs.

### PREP AREA:

- The Prep area is available to Sponsors and their Caterers.
- The Prep area has 2 sinks equipped with garbage disposals.
- A refrigerator is available for Sponsors use.
- There are no cooking facilities available in the Prep area.
- The use of Propane devices are prohibited inside the building.
- The Prep area must be cleaned at the end of the event. This includes sweeping mopping the Prep area floor. Failure to do so will incur a cleaning fee of no less than \$50.00.
- All trash and garbage **MUST** be removed from the building at the end of the event. Failure to do so will incur a Trash Removal Fee of \$10.00 per bag.

### GENERAL:

- A 10' x 14' or a 6' x 6' front & rear projection screen is available for presentations.
- Sponsor must provide their own projector.
- A Behringer 18 channel sound board and a dual deck CD player is available for functions. A qualified operator may be required.



BALLROOM